



PRELIMINARY

## RESIDENCE 1

### RESIDENCE 1

#### CATTLE RIDGE

Approx. 1,932 Sq. Ft.  
4 Bedrooms | 3 Baths  
2-Car Garage

#### OPTIONS

Opt. Outdoor Living



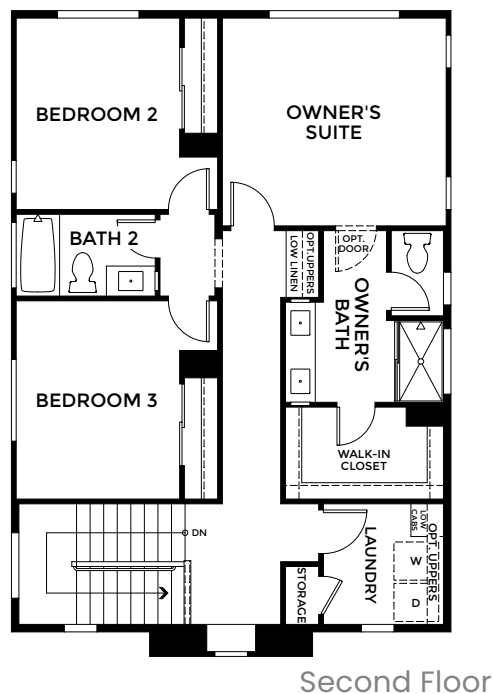
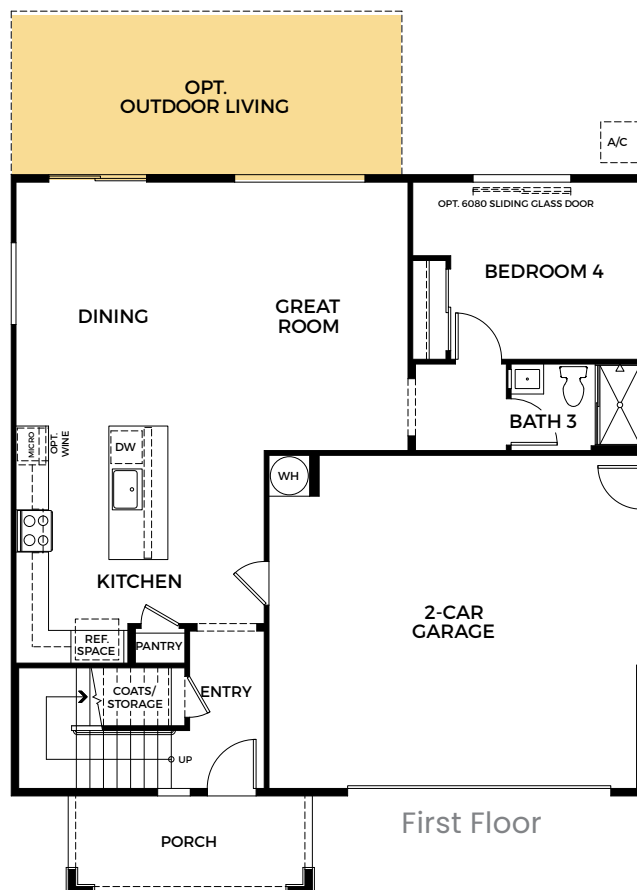
Farmhouse



Spanish



Tuscan

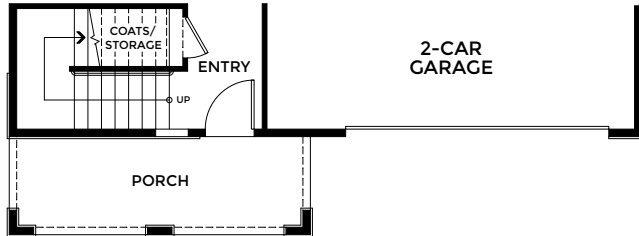


RENDERINGS AND FLOOR PLANS ARE ARTIST'S CONCEPTUAL DRAWINGS. SQUARE FOOTAGE AND ROOM DIMENSIONS ARE APPROXIMATE. WINDOW SIZES, SHAPES AND LOCATIONS VARY PER ELEVATION. DUE TO OUR ONGOING COMMITMENT TO QUALITY, FEATURES, FINISHES, FLOOR PLANS, INFORMATION, AND SPECIFICATIONS ARE SUBJECT TO CHANGE WITHOUT NOTICE.

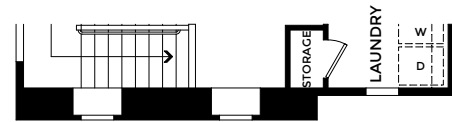


# RESIDENCE 1 - ELEVATIONS

## TUSCAN

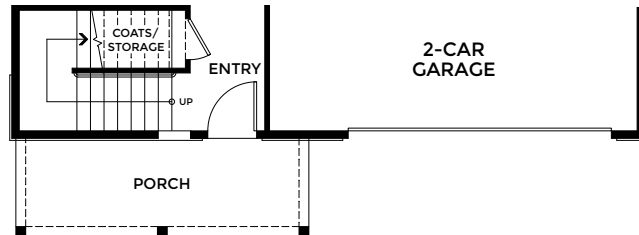


First Floor

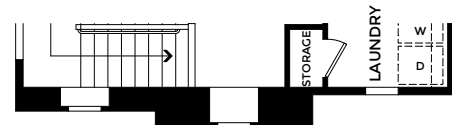


Second Floor

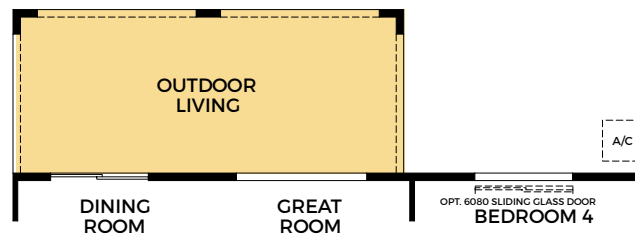
## FARMHOUSE



First Floor



Second Floor



Optional Outdoor Living

**PRELIMINARY**



**PRELIMINARY**

## RESIDENCE 2

### RESIDENCE 2

#### CATTLE RIDGE

Approx. 2,153 Sq. Ft.

4 Bedrooms | Loft

3 Baths | 2-Car Garage

#### OPTIONS

Opt. Outdoor Living



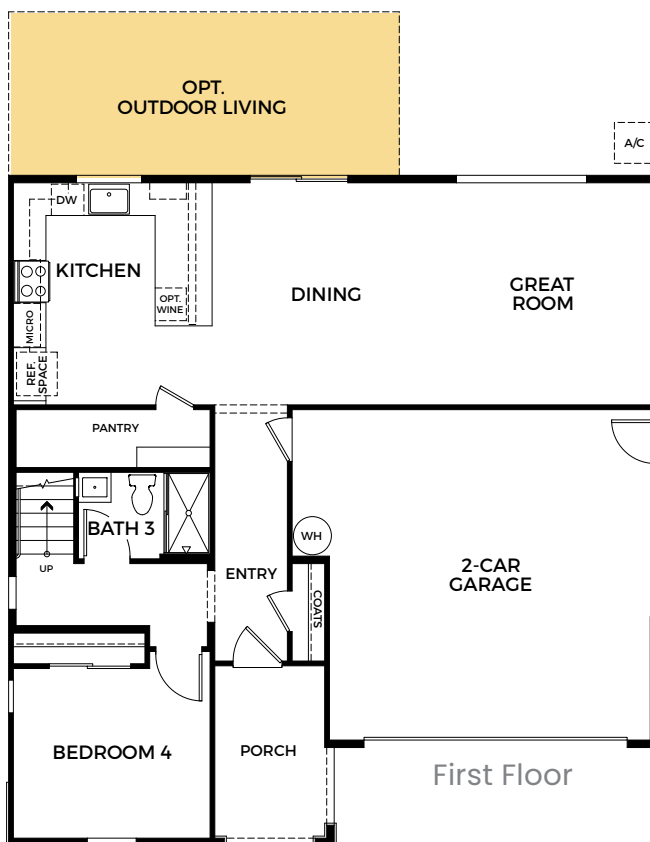
Farmhouse



Spanish

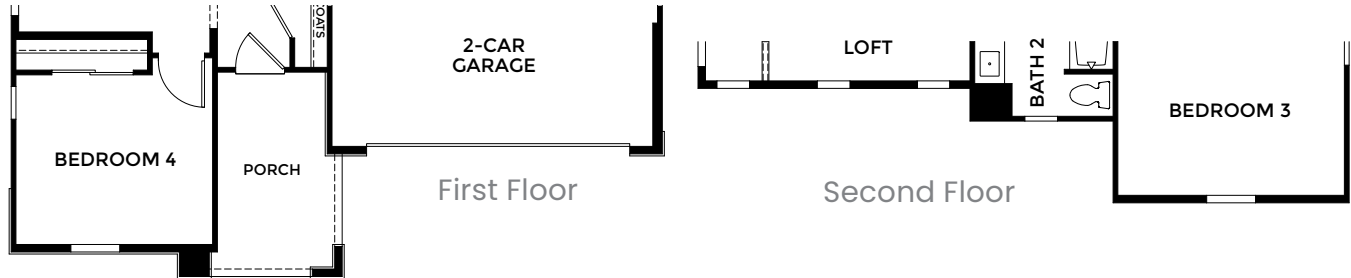


Tuscan

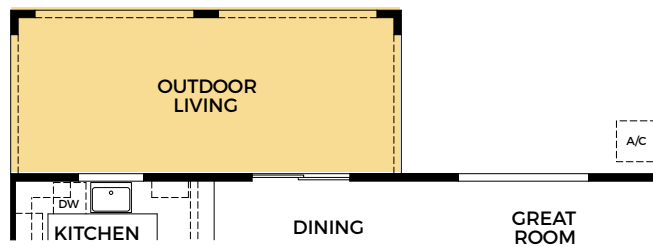
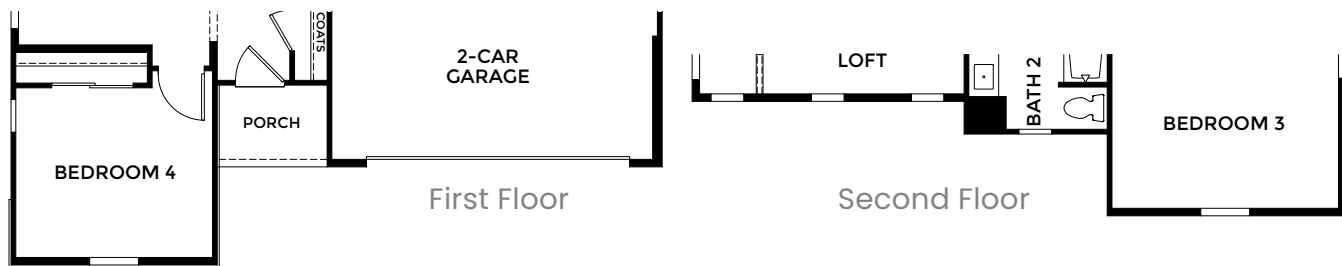


## RESIDENCE 2 – ELEVATIONS

### TUSCAN



### FARMHOUSE



Optional Outdoor Living

**PRELIMINARY**



### RESIDENCE 3

#### CATTLE RIDGE

Approx. 2,347 Sq. Ft.

4 Bedrooms | Loft

3 Baths | 2-Car Garage

#### OPTIONS

Bedroom 5 in Lieu of Loft



Farmhouse



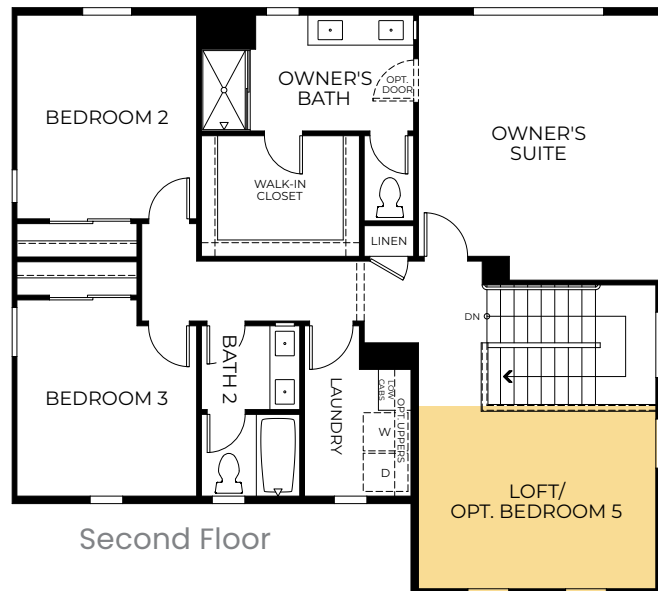
Spanish



Tuscan

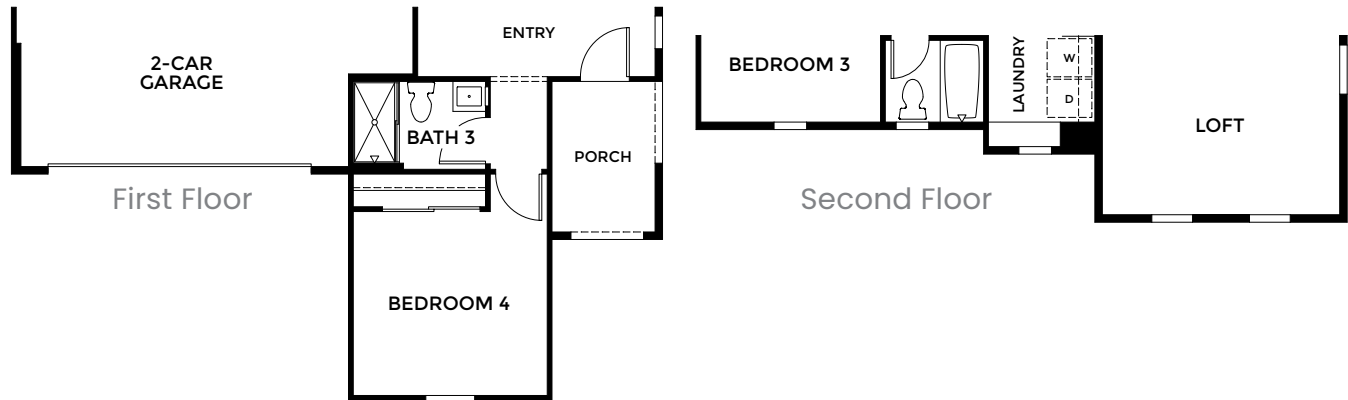
PRELIMINARY

## RESIDENCE 3

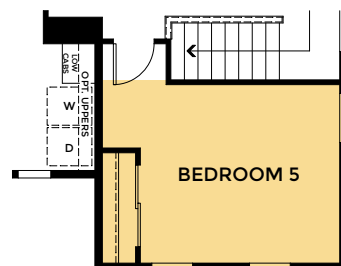
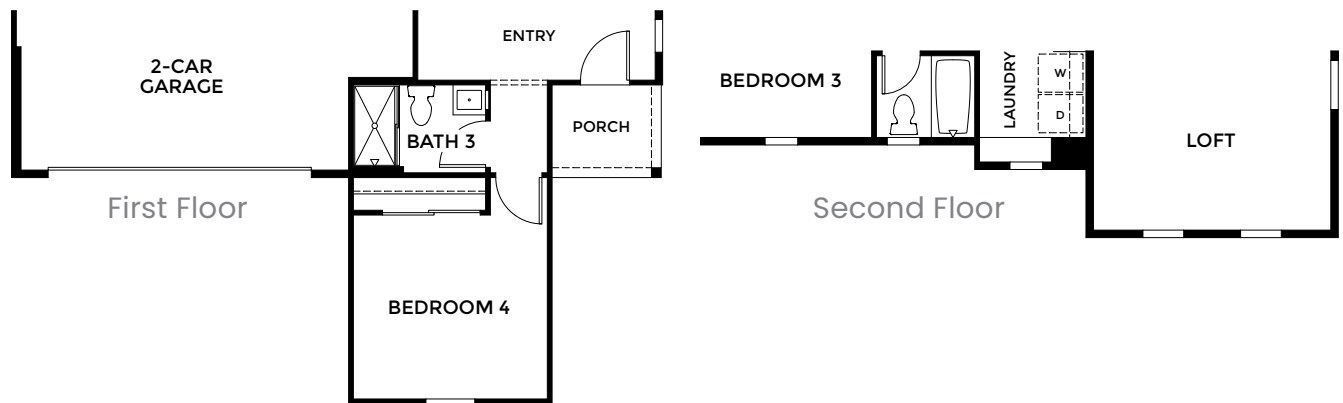


# RESIDENCE 3 - ELEVATIONS

## TUSCAN



## FARMHOUSE



Optional Bed 5 in Lieu of Loft

**PRELIMINARY**







**PRELIMINARY**

## RESIDENCE 4

### RESIDENCE 4

#### CATTLE RIDGE

Approx. 2,531 Sq. Ft.

4 Bedrooms | Loft

3 Baths | 2-Car Garage

#### OPTIONS

Bedroom 5 in Lieu of Loft

Opt. Outdoor Living



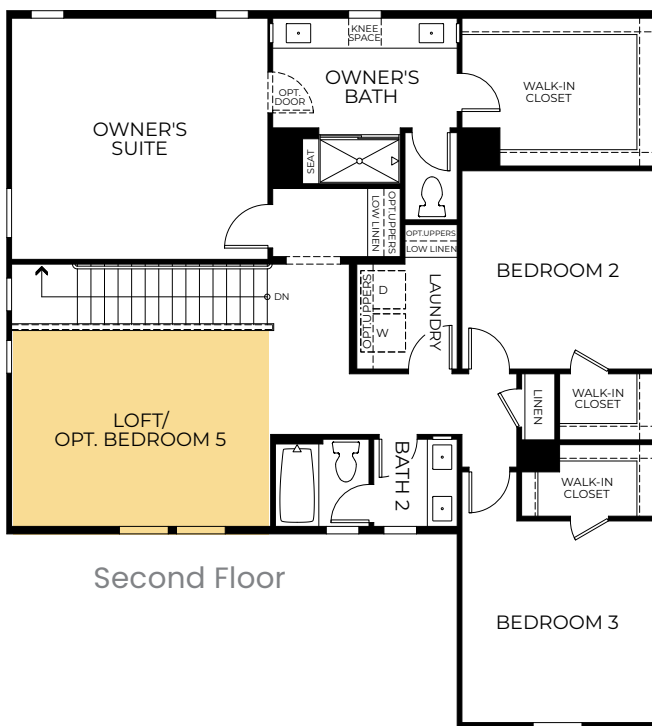
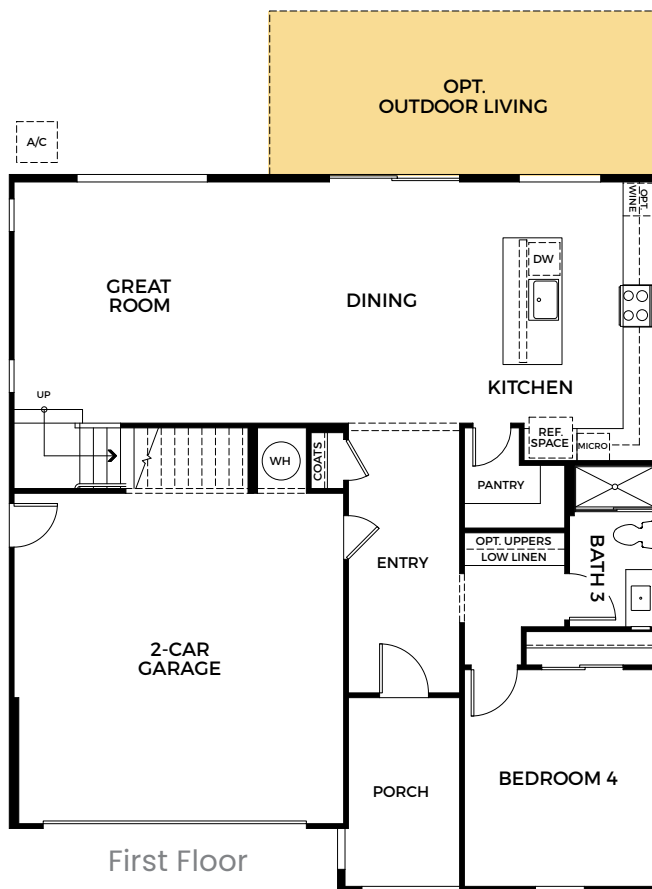
Farmhouse



Spanish



Tuscan



RENDERINGS AND FLOOR PLANS ARE ARTIST'S CONCEPTUAL DRAWINGS. SQUARE FOOTAGE AND ROOM DIMENSIONS ARE APPROXIMATE. WINDOW SIZES, SHAPES AND LOCATIONS VARY PER ELEVATION. DUE TO OUR ONGOING COMMITMENT TO QUALITY, FEATURES, FINISHES, FLOOR PLANS, INFORMATION, AND SPECIFICATIONS ARE SUBJECT TO CHANGE WITHOUT NOTICE.

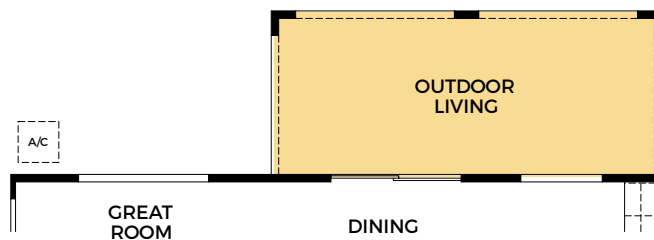
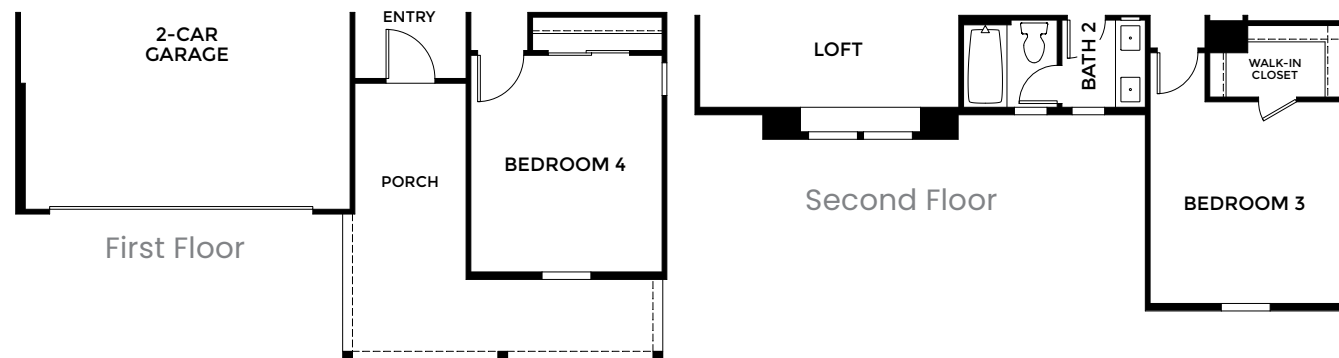


## RESIDENCE 4 – ELEVATIONS

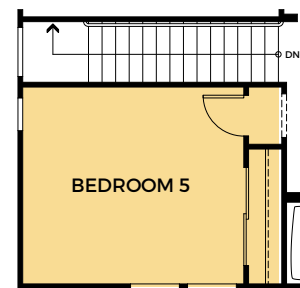
### TUSCAN



### FARMHOUSE



Optional Outdoor Living



Optional Bed 5 in Lieu of Loft

**PRELIMINARY**





## FEATURES - CATTLE RIDGE

**PRELIMINARY**

### INCLUDED

#### EXTERIOR FEATURES

- Three charming Exterior Elevations
- Designer-selected Exterior Color Scheme for enhanced Community Appearance
- 6 Panels - 8' Tru Entry Door with Kwikset® Satin Nickel hardware
- 16'X8' garage door with two remote controls
- Concrete Tile Roof
- Exterior wall mounted fixture (per plan)

#### DRAMATIC INTERIORS

- Open concept living spaces ideal for entertaining
- Birch Cabinets with Recessed Panel and Three Stain Choices
- Convenient linen cabinets (per plan)
- Hand laid 17"X17" Ceramic Tile Flooring at Entry, Kitchen, Dining Room, Bathrooms, and Laundry
- Designer-selected Carpet in all other rooms
- Standard medicine cabinet in all bathrooms
- Two-panel 8' interior doors with Kwikset® Ladera Lever chrome hardware
- 5 ½" baseboard

#### DESIGNER KITCHENS

- GE Stainless Steel Appliances including: 30" Freestanding Gas Range with Self-Clean Oven, 30" Hood, Microwave, and 24" Dishwasher
- Quartz Countertops with 6" Splash with full height at Cooktop in two color choices
- Delta® Antoni Single Handle Pull-Down Faucet - Stainless
- AmeriSink® Single Basin Stainless Steel Undermount Kitchen Sink.
- Refrigerator area pre-plumbed for ice/water
- Outlet with USB Charging Port

#### LUXURIOUS OWNER SUITES

- Private bath and walk-in closet
- Vanities with E-Stone Counter Tops, 4" Splash and Undermount Rectangular Sinks
- Chrome Hardware and Bath accessories
- Designer-selected Overhead Chrome lighting
- Spacious Estone Shower with Glass and Chrome Enclosure
- Square Cut Frameless Vanity Mirrors
- Outlet with USB Charging Port

#### QUALITY FEATURES

- Delta Plumbing Fixtures and Moen Accessories
- Designer-selected Chrome lighting
- 52" Ceiling Fan at Great Room
- Chrome Ceiling Lights in all Bedrooms
- Interior Fire Sprinkler System
- Smoke Detectors with Carbon Monoxide Alarm
- Finished Garage - Taped, Textured and Painted

#### SMART HOME FEATURES

- Electronic Front Door Smart Touch Screen Keypad
- Smart Z Wave Thermostat
- Flat Screen pre-wire at Family Room, Owner's Suite, and a loft (per plan)
- Dual Jack Data and RG6 cable wiring in Great Room and Bedrooms
- Ring Camera and Doorbell
- Heat Recover Ventilator in Laundry Room

#### GREEN LIVING

- Solar provided through Power Purchase Agreement or Purchase
- LED recessed lights
- Energy-efficient tanked hybrid water heater
- Low flow bathroom faucets
- Low-E Windows, Tempered Glass
- Future car charger installation possible with conduit sleeve located in garage.





## FEATURES – CATTLE RIDGE

**PRELIMINARY**

### OPTIONAL FEATURES AND UPGRADES

- Upgrade Appliance packages
- Refrigerator options
- Washer and Dryer options
- Quartz, Granite, and Natural Stone Counters with Decorative Edge Choices
- Designer-Appointed Backsplash options
- Tile, Natural Stone and Hardwood Flooring
- Designer Door style and Hardware selections
- Built-in Cabinetry
- Variety of Plumbing Fixtures in different finishes
- Two-tone Sherwin Williams interior paint options
- Framed Mirror selections at all bathrooms
- Pendant Lights, Vanity Lights and Ceiling Fan options
- Complete Home Security

